

InVISION™ FINISHER

Automated support removal system for
InVision™ 3-D printer models

The InVision™ Finisher is an industrial-grade, low-cost precision convection bench-top oven that automatically removes VisiJet® support material from models produced with the InVision 3-D printer.

Models produced on the InVision 3-D printer are built with wax supports. To complete the model, the supports must be removed. The Finisher complements the InVision 3-D printer by providing a high duty cycle, precision-automated support removal capability. When packaged with the InVision 3-D printer, it provides a convenient, dependable single-source turnkey solution for InVision 3-D printer users.

The precise thermal control provided by the Finisher ensures that the temperature is kept constant and allows the support material to be uniformly removed without damage to the model.

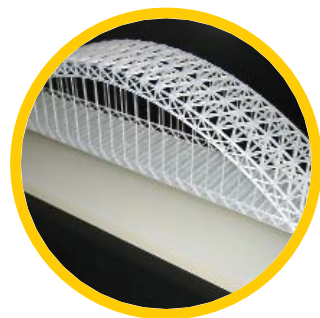
Using the InVision Finisher is easy — remove the parts from the InVision printer, separate the parts from the platform, and place the parts into the Finisher. The oven's precisely controlled thermal environment ensures that the support wax drips off the part, leaving the finished part. The removed support material may be disposed of as ordinary office waste in any receptacle after cooling to a solid.

For large parts, users may elect to first immerse parts (with supports) into a bath of liquid support material for accelerated support removal before placing it onto the Finisher rack for final support removal. The Finisher includes a tray with ample depth to serve double-duty as a liquid bath — offering multiple methods of support removal within a single unit.

The InVision Finisher provides reliable, durable, versatile and convenient support removal for models produced with the InVision 3-D printer.



**InVision printer model
with supports**



**Support structures
removed automatically**



Benefits:

- Reliable, trouble-free performance provides years of dependable service
- Precise, easy-to-read digital controls regulate temperatures within tight tolerances
- Corrosion-resistant stainless steel interior and plated shelves for long service life and low maintenance
- Forced convection airflow design offers high productivity at low cost
- Unique chamber design and two inches of high-grade insulation to minimize heat loss
- UL and C-UL listed; CE compliant
- Internal shelves and tray especially designed for effective support removal

Applications:

- Remove wax supports from InVision printer models



InVision™ Finisher Specifications

TECHNOLOGY

Product	InVision™ Finisher
Models	Finisher 1-A (120 VAC) Finisher 1-B (240 VAC)
Technology	Forced convection from top-mounted fan and side plenums
Warranty	90 days (U.S.A. and Canada only); EU — 1 year
Certifications	UL and C-UL listed, CE compliant

PHYSICAL

Chamber size	46 x 46 x 30 cm (18 x 18 x 12 in) (WxDxH)
Capacity	65 L (2.3 ft ³)
Electrical	Finisher 1-A: Single-phase, 120 VAC, 11.6 A, 50/60 Hz, 1.2 kW heater Finisher 1-B: Single-phase, 240 VAC, 5.8 A, 50/60 Hz, 1.2 kW heater
Exhaust diameter	63.5 mm (2.5 in)
Cord and plug	15 A (Finisher 1-A, 120 VAC) 10 A (Finisher 1-B, 240 VAC)
Weight (uncrated)	63 kg (140 lb)
Weight (crated) ¹	U.S.A.: 93 kg (205 lb); International: 118 kg (260 lb)
Dimensions (uncrated) ¹	61 x 62 x 66 cm (24 x 24.5 x 26 in) (WxDxH)
Dimensions (crated) ¹	86 x 91 x 118 cm (34 x 36 x 46.5 in) (WxDxH)

FUNCTIONAL

Sound emission	Negligible
Time to temperature ²	25 - 75 °C (77 - 167 °F) — 7 minutes
Recovery time ^{2,3}	@75 °C (167 °F) — 45 seconds
Operating range (support removal)	70 - 75 °C (158 - 167 °F)
Maximum operating range	25 - 204 °C (77 - 400 °F)
Control stability	±0.5 °C (0.9 °F)
Tray shelf capacity	9 kg (20 lb)
Usable shelf area	20 x 30 cm (11 x 12 in)
Usable space above shelf	19 cm (7.5 in)
Tray depth	90 mm (3.5 in)

ACCESSORIES KIT (INCLUDED) ⁴

Absorbent drip pads ⁵	20 each @ 305 x 305 mm (12 in x 12 in)
Wipes ⁵	EX-L (Kimberly Clark)
Part Tongs	Qty. 1 — 235 mm (9.25 in) length
Insulated gloves	One pair

¹ Approximate nominal values and subject to change without notice. Includes shipping pallet.

² Time to temperature and recovery times are based on 240 VAC, 60 Hz operation. Actual results may vary slightly depending on unit configuration and operating conditions.

³ Time required to return to temperature after door is open for one minute.

⁴ Accessory kit is included with the initial purchase. Consumables may be ordered separately.

⁵ These items are consumables and sourcing information is available upon request.

Warranty/Disclaimer: The performance characteristics of these products may vary according to product application, operating conditions, material combined with, or with end use. 3D Systems makes no warranties of any type, express or implied, including, but not limited to, the warranties of merchantability or fitness for a particular use.



SourceGraphics™

Source Graphics
1530 N. Harmony Cir.
Anaheim, CA 92807
Phone: (800)791-9042
Fax (714)701-1505

www.sourcegraphics.com

© Copyright 2004 by 3D Systems, Inc. All rights reserved. Specifications subject to change without notice. The 3D logo and VisiJet are registered trademarks, and 3D Systems and InVision are trademarks of 3D Systems, Inc. "The solid imaging company" is a service mark of 3D Systems, Inc. All other product names or services mentioned are trademarks or registered trademarks of their respective companies.